



**Regency Facade**

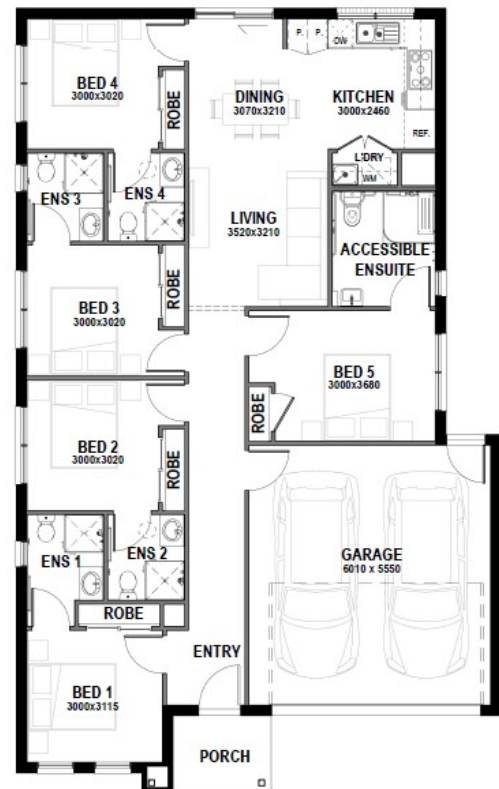
## **Lincoln 20 Co-Living - 1B Regency**

Alluvium Estate  
Lot 622 Milanesia Pl, Winter Valley

Title date: Titled  
Land Width: 12.5m  
Land Depth: 32m

Land Area: 400(m<sup>2</sup>)  
Land Price: \$280,000  
House Price: \$ 423,500  
Total House Area: 177.28(m<sup>2</sup>)  
Orientation: North East

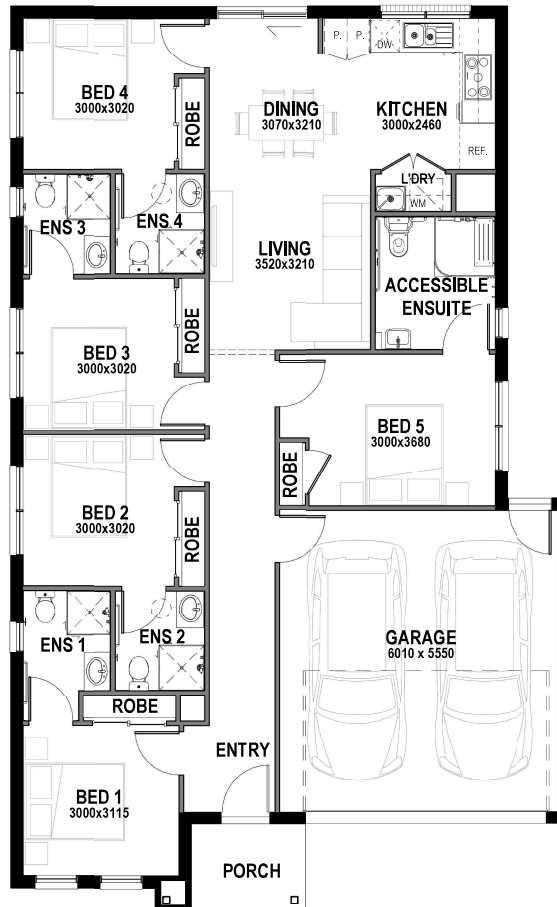
Co-Living Turnkey Inclusions  
Add \$9,500 for upgrade to multi head split  
system to beds & living



Issued: 22/04/2026 Printed: 14/05/2026

### **Goldstate Homes**

All images used are an artist impression for illustrative purposes only and may show items that are not included in the price. Facade details and floor plans may vary, please refer to inclusions, final working drawings and final documentation. We reserve the right to change or withdraw pricing without any notice. Land availability, title dates and pricing is subject to change without any notice. Information provided by the developer is subject to change, builder not responsible for the detail therein. Goldstate Pty Ltd, registered building practitioner CDB-U 75573.



### BEDROOM AREA

BED 1	10.5 m <sup>2</sup>
BED 2	10.9 m <sup>2</sup>
BED 3	10.9 m <sup>2</sup>
BED 4	10.9 m <sup>2</sup>
BED 5	12.8 m <sup>2</sup>
TOTAL	55.9 m <sup>2</sup>

### GROUND FLOOR

LIVING	136.62 m <sup>2</sup>
GARAGE	36.43 m <sup>2</sup>
PORCH	4.22 m <sup>2</sup>
	177.28 m <sup>2</sup>
	19,07 SQ.

MINIMUM LAND SIZE: 12.5 x 25.0 (312.5 m<sup>2</sup>)

NOTE: ACTUAL LOT SIZE MAY VARY.

SITE COVERAGE: 56.69%

## LINCOLN 20 CL FLOOR PLAN NCC 2022

# Co-Living Inclusions (1B)

## Building Permit

- Site Assessment & Survey
- Energy Rating Report (min. 7 star)
- Bushfire (BAL) Compliance (where applicable)
- Building Permit

## Services

- Stormwater, Sewer, Water & Single-Phase Underground Power (to existing infrastructure)
- Recycled Water (where applicable)
- NBN run in to front of home (where available)
- NBN, Telephone & Electricity by Builder; Connection Fees by Owner

## Site Conditions / Foundations

- Engineer Designed Slab – Up to P Classification (no piers or suspended slab allowed)
- Site fall over building area no greater than 500mm
- Rock excavation & removal allowance included (explosives & core drilling not included)
- Termite Treatment
- Temporary Fencing
- Site Signage & Waste Management to meet Council Requirements

## Maintenance & Warranty

- 3-month maintenance
- 10-year structural warranty

## Structural & External Features

- Engineer designed wall frames & roof trusses
- Face brickwork with rolled joints and natural coloured mortar (design specific)
- Acrylic rendered feature to front facade (design specific)
- Rendered lightweight cladding or painted cement sheet cladding (design specific)
- Concrete roof tiles
- Colorbond fascia, guttering and downpipes
- Feature Aluminium Windows to front façade (design specific)

- Aluminium Windows & External Door (design specific)
- Keyed Locks provided to all openable windows and doors
- Aluminium Framed Flyscreens provided to all openable windows
- Feature Front Entry Door (design specific)
- Programmable Entry Lockset with PIN Code keypad to front entry door
- Entry Lockset to other hinged external doors (design specific)

## Garage

- Sectional Colorbond garage door with 2 remote controls
- Plasterboard lined ceiling & walls with cove cornice (design specific)
- Concrete slab floor
- Hinged External Access Door with Entry Lockset (design specific)
- Flush panel hinged internal access door to between home & garage (design specific)

## Ceiling Height

- 2590mm high (nominal) ceiling heights

## Kitchen Appliances

- 900mm electric stainless-steel oven
- 900mm electric ceramic cooktop
- 900mm stainless steel rangehood
- 600mm freestanding under bench stainless steel dishwasher
- Microwave provision (design specific)
- 1 & 1/3 bowl stainless steel sink
- Sink mixer tap

## Kitchen Cabinetry

- 20mm engineered stone benchtops with square edge
- Laminate cabinet doors, drawers & kickboards
- Melamine modular cabinets
- Chrome handles
- Pantry with melamine shelves & lockable sections (design specific)

## Ensuites

- 20mm engineered stone vanity tops with square edge

# Co-Living Inclusions (1B)

- Laminate cabinet doors & kickboards
- Melamine modular cabinets
- Chrome handles
- Inset vanity basin with chrome plug & waste
- Semi framed shower screen
- Mixer tapware to vanity basin & shower
- Single hand shower & rail
- Close coupled toilet suite
- Single Towel Rails & Toilet Roll Holders
- Polished Edge Mirrors
- Tiled Shower Bases

## Ensuite – Ambulant

- Minimum of 1 (one) bathroom including circulation space AS1428.1 compliant
- Tiled Shower Base
- Step free & hob less shower
- Shower curtain & rail
- Shower seat
- Sanitary ware and tapware AS1428.1 compliant
- Wall Hung Basin with Bottle Trap
- Polished Edge Mirror

## Laundry

- Stainless Steel trough & white metal cabinet
- Mixer tapware
- Hot & Cold washing machine stops (located under trough)

## Internal Tiling

- Ceramic wall tiles to ensuites and kitchen / laundry splashback
- Ceramic floor tiles to wet areas
- Refer to final drawings for location & extent of wall and floor tiles

## Floor Coverings

- Carpet to bedrooms (design specific)
- Laminate timber look flooring to living areas & kitchen, installed after skirting with quad finish (design specific)
- Refer to final drawings for location & extent of floor coverings

## Paint

- Water based acrylic paint to all walls & ceilings
- Gloss enamel water-based paint to internal doors, architraves, skirting boards and door jambs

## Insulation

- Insulation to all external walls & ceilings as defined in the home specific energy rating report

## Plaster

- 10mm plaster board to walls & ceilings
- Water resistant plaster board to all wet areas in accordance with waterproofing standards
- 75mm cove cornice throughout

## Skirting Boards & Architraves

- 67mm x 12mm bevelled MDF throughout home
- 138mm x 18mm bevelled MDF to Garage

## Doors

- Flush panel 2040mm high internal doors
- Chrome door furniture to internal doors (excluding bedroom doors)
- Programmable Entry Lockset with PIN Code keypad to all bedroom doors (refer to signed colour selection)
- Door stops to all hinged doors in white (where applicable)

## Storage

- Robes to all bedrooms including mirror sliding doors, 1 x melamine shelf & hanging rail (design specific)
- Linen cupboard including vinyl sliding doors & melamine shelves (design specific)

## Hot Water System

- Electric heat pump (design specific)

## External Taps

- 2 external taps – 1 to front & 1 to rear (refer to final drawings for locations)

# Co-Living Inclusions (1B)

## Heating and Cooling

- Wall hung heating panels to all bedrooms (design specific)
- Split system air-conditioning unit located in main living area (design specific)

## PV System

- PV System to meet energy rating requirements

## Electrical

- White LED downlights throughout home & front entry
- 1 x fluorescent strip light to garage
- Floodlight with sensor outside external doors (excluding front entry)
- Double power points throughout home
- Single power points to fridge, dishwasher and microwave space
- External waterproof power point/s
- 1 x TV point to living  
Note: does not include antenna.  
Cable will be coiled in roof space ready for installation of antenna by Owner after handover
- Telephone / Data points to kitchen, living & bedrooms
- Ducted exhaust fans with timer to ensuites and laundry, interlocked with room light to comply with NCC 2022 (design specific)
- White wall mounted switches & GPO's
- Smoke detectors hardwired with battery backup
- RCD Safety Switch
- Refer to final drawings for extent and locations of all Electrical items

## Window Coverings

- Block out roller blinds with chain winder to all windows and external doors (not included to obscure glazed windows or sidelights to entry, if applicable)

## Landscaping

- Basic landscaping package included
- Coloured concrete driveway
- Irrigated Turf to front & rear garden (if applicable)
- Lilydale / Tuscan Toppings (as determined by Builder)
- Drought resistant planting to front & rear garden beds including mulch (if applicable)
- Letter box
- Ground mounted folding clothesline (design specific)
- Landscaping Design (where applicable) to be determined by Builder, refer to final drawings for extent and selections

## Fencing

- Boundary fencing in accordance with Estate requirements (if required)

## General Items

- All inclusions are selected from the Builder's standard range of products
- All colours & finishes are as per the signed colour selection
- All sanitary ware white unless noted otherwise
- Domestic Building Insurance not applicable for Building Classification 1b Rooming Houses
- Final signed documents override all prior documents and inclusions
- Rooming house designs are subject to approval by the relevant estate developer and all applicable planning and statutory authorities. Goldstate Homes accepts no responsibility where such approvals are not obtained.