

MINIMUM  
9M BLOCK  
WIDTH



**Homepay**  
Build now, pay later

Pause your loan repayments for up to 12 months on **build and land**

Illustrative Purposes Only



House Width 7.60 m  
House Length 17.35 m

**Home Specifications**

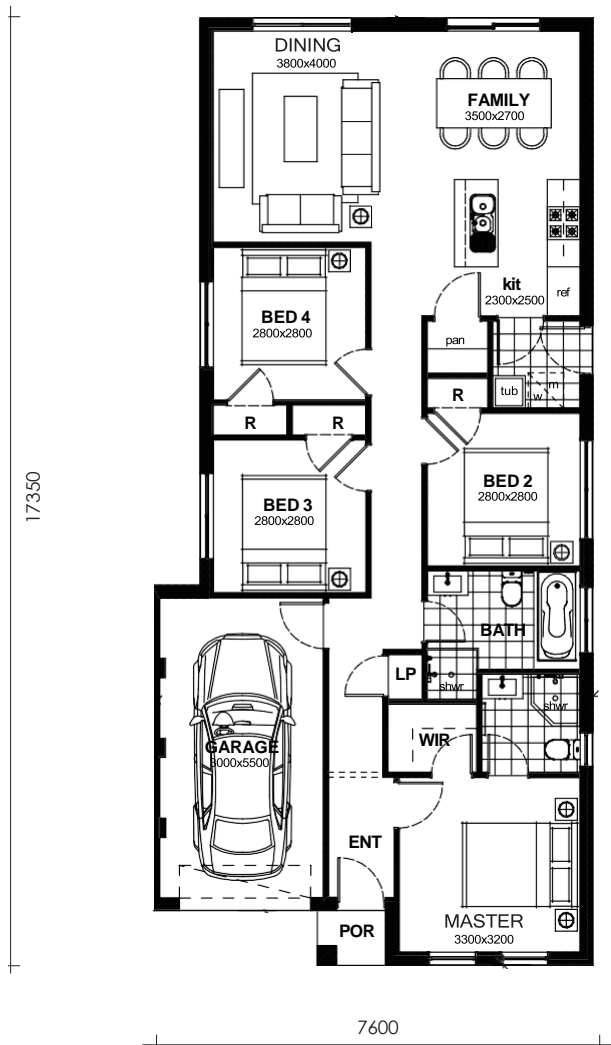
Ground Floor	108.3 m <sup>2</sup>
Garage	18.0 m <sup>2</sup>
Porch	1.6 m <sup>2</sup>
<b>Total Area</b>	<b>13.77 sq / 127.9 m<sup>2</sup></b>

**Homepay Package  
SANTA MONICA 4  
Home Inclusions**

- **6 MONTH FIXED PRICE**
- Metro/Classic Facade
- Upstyle Promotion included FREE
- Modern Inclusions
- Ducted Actron Classic Air Conditioning
- 20mm Engineered Stone Benchtops to Kitchen and Vanities
- 900mm Westinghouse Cooktop and Oven
- 2590mm Ceiling Height to Ground Floor
- Tiles to Main Living Areas and Porch
- Carpets to Bedrooms
- Mirror sliding robes, blinds to windows
- Insulation to Walls and Sarking to Roof
- 30 LED Downlights. flyscreen to windows
- Site Costs & 7 Star Basix Rating
- 'Coloured On' Concrete Driveway
- land size 362m<sup>2</sup>, land registration mid 2026
- *Approved Homepay customers T&CA*

**HOUSE PRICE \$403,060**  
**LAND PRICE \$648,500**

# Build with Trusted Confidence



## Santa Monica 4

Designed and tailor made for functional living to meet your families individual needs.

This home comes complete with quality inclusions and offers open plan living, four bedrooms the master with ensuite and walk-in robe, great storage and single garage.

### Room Measurements

Garage	3.0 x 5.5	Master	3.0 x 3.2
Kitchen	2.3 x 2.5	Bedroom 2	2.8 x 2.8
Family	3.5 x 2.7	Bedroom 3	2.8 x 2.8
Dining	3.8 x 4.0	Bedroom 4	2.8 x 2.8

